

G.R.P KIOSKS



JLM COMPOSITES LTD

G.R.P. Composite Kiosks

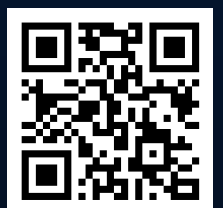


TABLE OF CONTENTS

02

About Us

Background of J.L.M Composites Ltd.

Our Mission

Meet the team

03

Kiosk Specification

A break down of our Standard Kiosk Specification.

How a Kiosk is made up

07

Kiosk Doors

Elements of the Kiosk door, including handle, hinges and security cover box

08

Optional Extras

Additional extras that are not part of a standard Kiosk, however can be added.

09

SR3 Rating

Kiosks can be made to SR3 standard using the same process and standards that J.L.M. are currently certified for

11

Standard Kiosk sizes

Listing of our standard Kiosk sizes (effective Jan 2023)

12

Colours Available

Standard colours.

QR code to list of extensive colours available

09

Clients

Customers (kiosks) that have worked with J.L.M. composites Ltd

Summary

About us

J.L.M. Composites Ltd started manufacturing G.R.P. products from 2012.

J.L.M. core business was to manufacture G.R.P. building products for the construction industry. Overtime our product range expanded to include a range of G.R.P kiosk

Our mission

To efficiently design and manufacture top quality products and affordable prices.

Our Product

J.L.M Composites have an extensive range of products.

- G.R.P. Kiosk
- G.R.P. Door Canopies
- G.R.P. Dummy Chimneys
- G.R.P. Bay Window Canopies

J.L.M. are a bespoke manufacturer therefore if you have a product you would like made in G.R.P. please contact our sales team on sales@jlmcomposites.com

Our Competitive Advantages

Here at J.L.M Composites Ltd we ensure all our kiosk are complete to the highest standard quality.

We are one of the leading manufacturers of G.R.P. Kiosks on the island of Ireland.

We have 20 team members with over 65 combined years experience in G.R.P.

We offer a range of standard sizes kiosks along side the option of bespoke sizes. All kiosks are made to order and can be adjusted to suit your needs.

Our Team



John McGurk
Managing Director



Leeann Rocks
Head of Sales



Zydrunas
Lukosius
Production Manager



Bernie McGurk
Head of Accounts



Paula McGurk
General Manager

Contact

sales@jlmcomposites.com

www.jlmcomposites.com

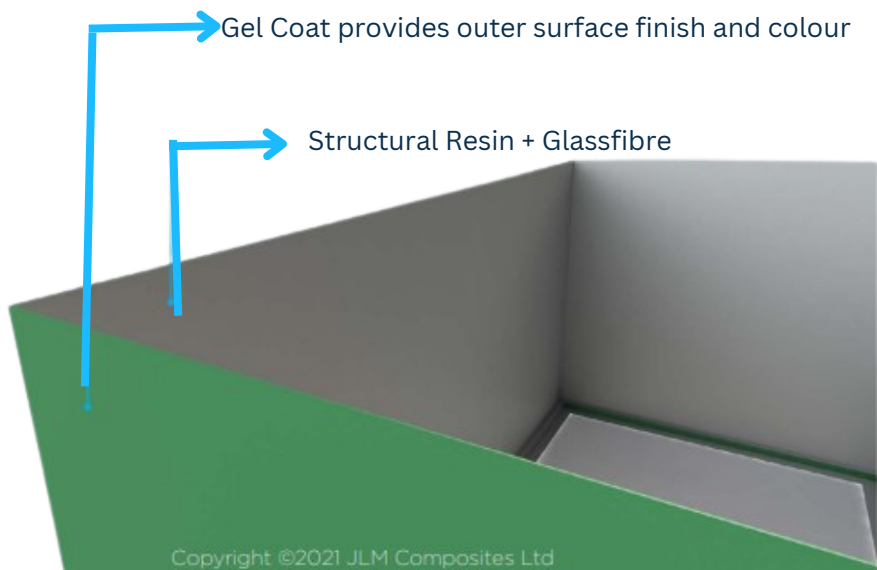
47a Gortnagola Road,
Donaghmore, County Tyrone
BT70 3BD

0044 (0) 28877 59773



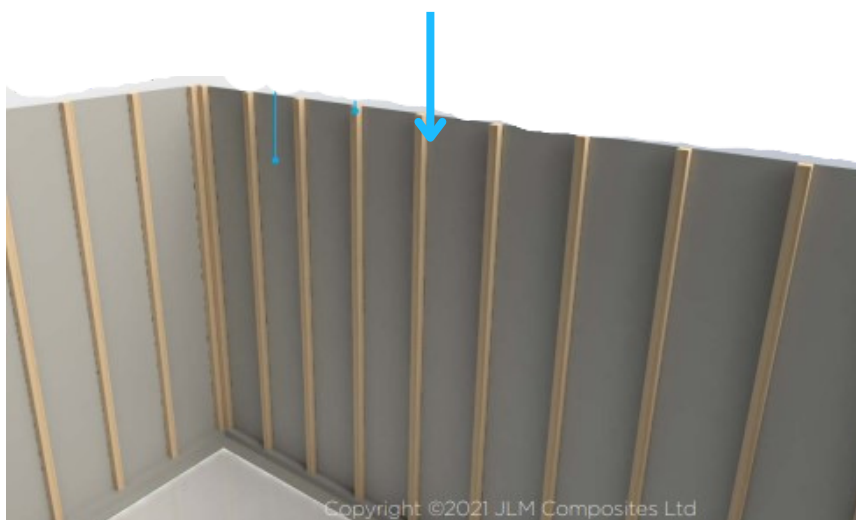
Kiosk Specification

Isophthalic gel not less than 0.8kg/m² with 450g/m² chopped strand wet with polyester orthothalic resin to BS 476 part 7 spread of flames at a ratio not more than 2.8:1 (resin:mat). 40mm polyisocyanurate foam core, 20-25 kg/m³ and to BS476 part 7 class 2 to be encapsulated within the above lamination to give wall thickness of @ 50mm. Vertical timbers battens spaced at appropriate centres to be encapsulated by further layers of 450 g/m² chopped strand wet as above. 50 x 50 x 3mm steel angle to be encapsulated along the full length of the internal base flange
All internal surfacing to be coated with a glaze coat applied at a rate of not less than 0.8 kg/m².



- 11 of our kiosks are created in custom moulds**
- **Outer Gel Coat - To Customer's Specific Colour***
 - **Reinforced with Glassfibre matting and resin**
 - **JLM's SD Kiosks use Class 2 Fire Rated resins to enhance the overall fire resilience of our FR range**

Timber Battens are fixed (typically 400mm centres)



Whilst glassfibre and class 1 resin coat is still tacky, battens are added for structural strength and to also provide 'grounds' for future MEP containment systems.

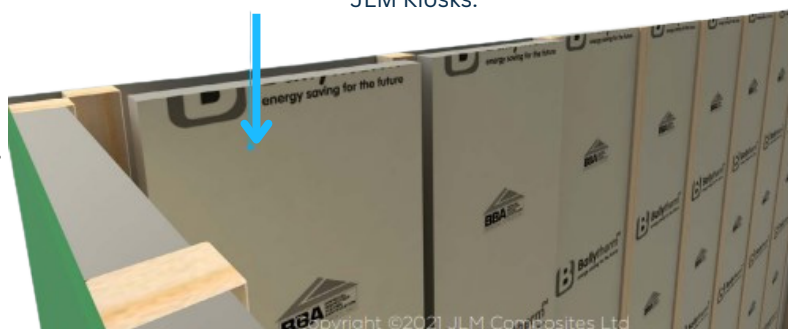
- 2in x 2in Timber Battens - typically at 400mm centres

Thermal insulation

- 38mm Ballytherm PIR Insulation Boards
- Providing excellent thermal insulation properties.

Ballytherm insulation boards have an extremely low thermal conductivity, making the required thickness of insulation less than for most other types of insulation an ideal choice where you are restricted with depth. Ballytherm insulation boards will remain stable at temperatures up to 400°C with Class 1 surface spread of flame. If temperatures reach higher than 400°C, a protective char forms on the surface on the boards to slow the spread of flames

38mm PIR Insulation is then installed to provide an industry leading U-value for all JLM Kiosks.



Once all insulation is in place, the entire interior receives an encapsulating layer of Class 2 Fire Resistant Resin and Glassfibre matting



Following the installation of the PIR insulation, our kiosks receive an encapsulating layer of Class 2 fire rated resin which is reinforced with fibreglass matting.

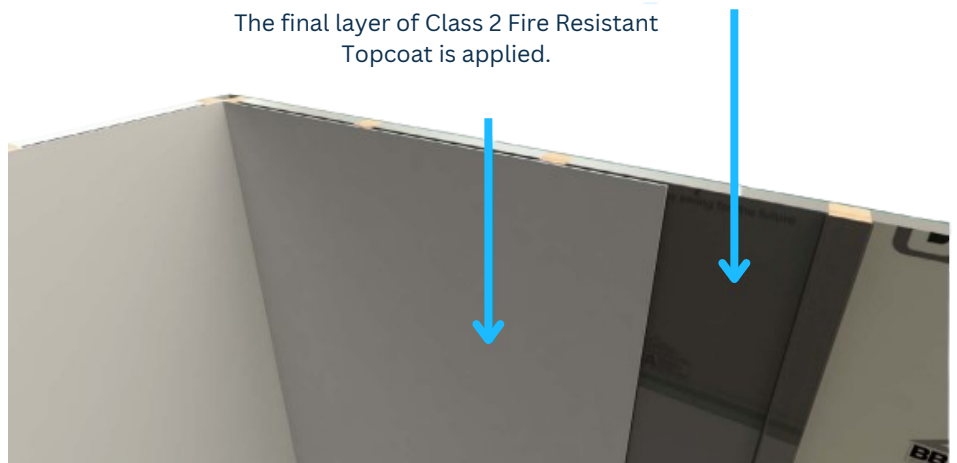
- This 4mm thick layer entirely encapsulates all previous substrates and cures to a very hard finish and provides an excellent level of fire protection for demanding environments

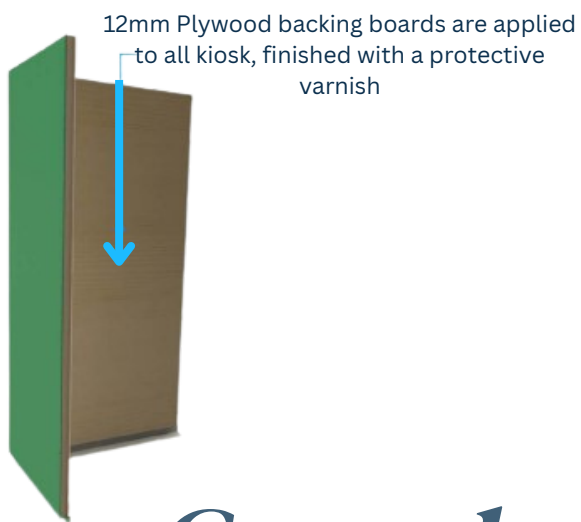
The GRP composite enhancements are completed by the application of the Class 2 Fire Resistant Top Coat.

For additional fire safety you can refer to our FR Kiosks that are made to BCAR specification.

After the encapsulating layer of Class 2 Fire Resistant Resin

The final layer of Class 2 Fire Resistant Topcoat is applied.



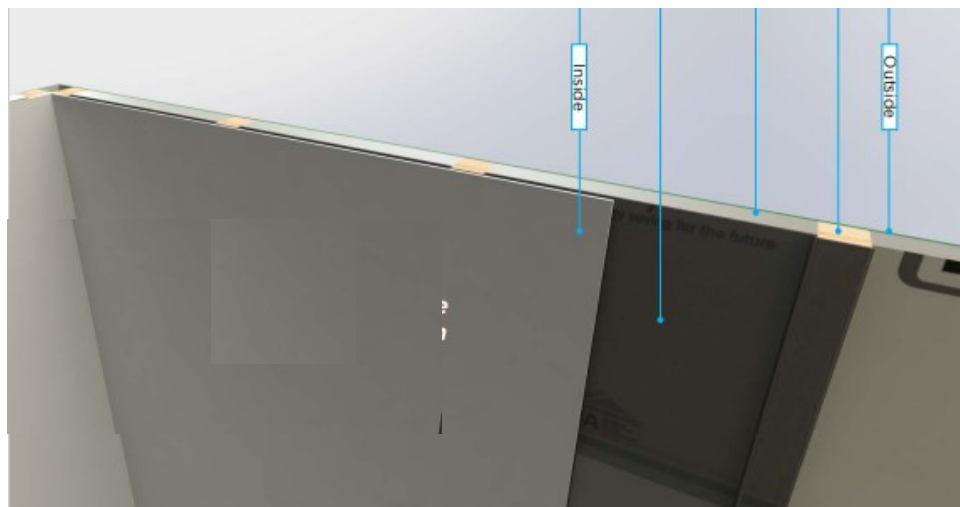


Plywood Sheeting is often requested and installed, to provide grounds on internal walls for fixings when installing internal equipment;

- Can be installed floor to ceiling
- 12mm thick (18mm available)
- Yacht varnish (standard kiosk)

Complete Kiosk

Gel Coat + Class 2 Resin +
Glassfibre
Structural Timber Studs
Thermal PIR Insulation
38mm
Class 2 Resin & Glassfibre
layer
Class 2 TOPCOAT



Kiosk Doors

All Doors will incorporate the following fixings



3 point turn
Padlockable Handle



Shoot Bolts – Applied to
the top and bottom of
doors



Custom Built robust
telescopic door stop



Stainless Steel Door fold



Stainless Steel Flat Plate
Door Hinge



Security Lock Box

Optional Extras

J.L.M. offer a range of optional extras that can be added to your kiosk
at any time

Element
SR3 Security Doors <i>*PTO</i>
Generators Flap
Removable Threshold
Extra Door
18mm backing board instead of 12mm
Dividing wall/Sections
Removable Roof
Solar Panel

SR3 Rating

J.L.M. Composites Ltd are currently tested to make a kiosk to SR3 standard. The listing can be found on the RedBook online

JLM Composites Limited

47a Gortnagola Road, Donaghmore, Dungannon, Co. Tyrone, Northern Ireland BT70 3BD, United Kingdom

Tel: +44 (0)28 8775 9773

E-mail: sales@jlmcomposites.com • Website: www.jlmcomposites.com

Certificate No: 1551a to LPS 1175: Issue 7

Security Cabinet

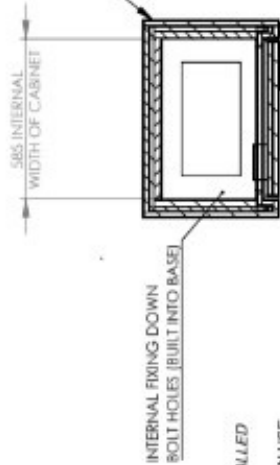
Product Name	Type	Height (m)	Width (m)	Depth (m)	Security Rating	LPCB Ref. No.
Solar Kiosk	Five-sided GRP security cabinet incorporating a single leaf doorset	1.795	1.05	1.50	3	1551a/01

A copy of the certificate, confirming the full scope of approval, may be viewed online by clicking on the product name in the associated entry on www.RedBookLive.com

As this is certification is size specific and it is a lengthy process to get each size of kiosk tested, we can guarantee our customers that we are able to make a kiosk to SR3 standard if required.

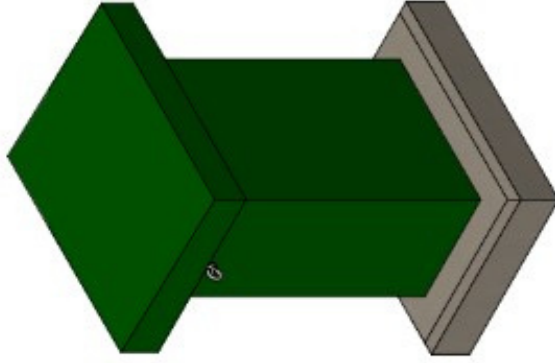
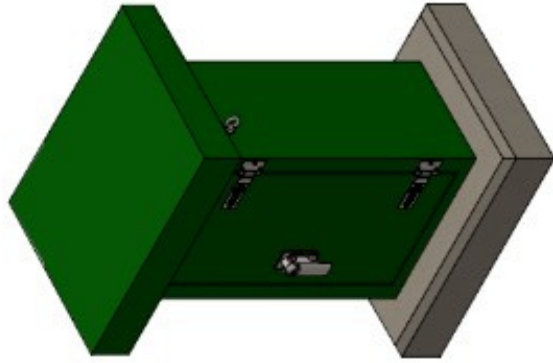
The standard would be the same used to make the kiosks that have been previously tested and certified under *Certificate 1881a to LPS 1175: Issue 7*

WALL CONSTRUCTION ON PAGE 2

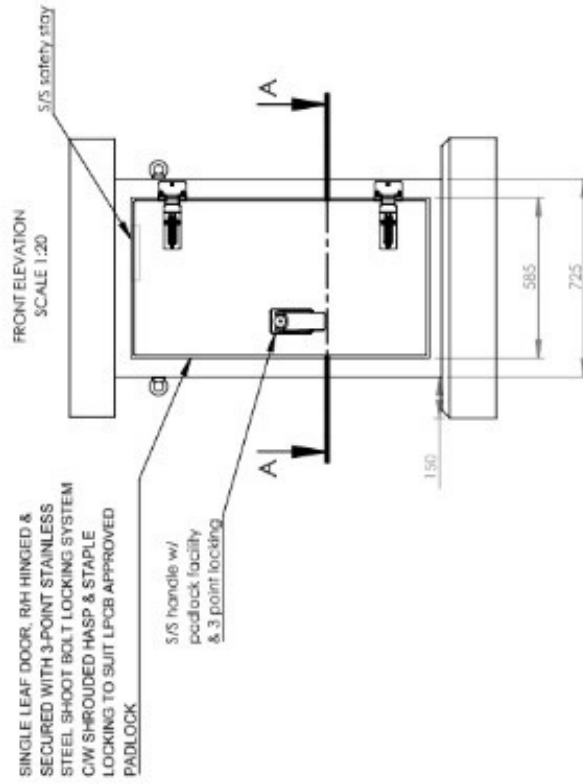
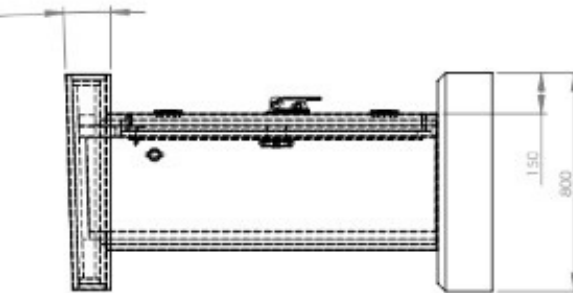


IMPORTANT NOTE
THE SAMPLE TAP CABINETS SHALL BE INSTALLED AS PER THE MANUFACTURER'S RECOMMENDATIONS. THE CONTRACTOR CAN USE A SIMILAR APPROVED CABINET BUT IS RESPONSIBLE FOR ANY ASSOCIATED COSTS.

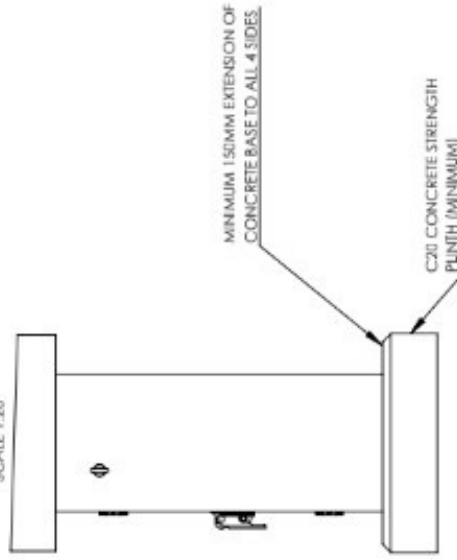
SECTION A-A
SCALE 1:20



SLOPING ROOF TO PREVENT RAIN WATER ACCUMULATION AT 1.81°



SIDE ELEVATION
SCALE 1:20



TITLE	SR3 Kiosk	MANUFACTURER	JLM Composites
UNLESS OTHERWISE SPECIFIED, DIMENSIONS ARE IN MILLIMETERS		AUTHOR	John McGurk
TOLERANCES:		DATE	18th NOVEMBER 2017
LINEAR:		SCALE	1:20
ANGULAR:		MATERIAL	
			SHEET 1 OF 3

Standard Size Kiosks

Kiosk Sizes (w x h x d)

2000x2000x1500

1500x1500x500

5000x2500x3000

4000x2500x3000

1500x2650x1500

1500x1500x1500

2600x1500x1200

2100x1500x1000



Colours Available

**J.L.M. have a wide range of Kiosk Colours available.
There are a few primary (main) colours which are below**



**Other RAL colours are available on request.
Use the QR code below to view the colours available**



Clients



WATERTECHNIK
engineered wastewater solutions



WHITEWATER

Caring about water since 1932







JLM COMPOSITES LTD
47 A GORTNAGOLA ROAD
DONAGHMORE
COUNTY TYRONE
BT70 3BD

004428 87759 773